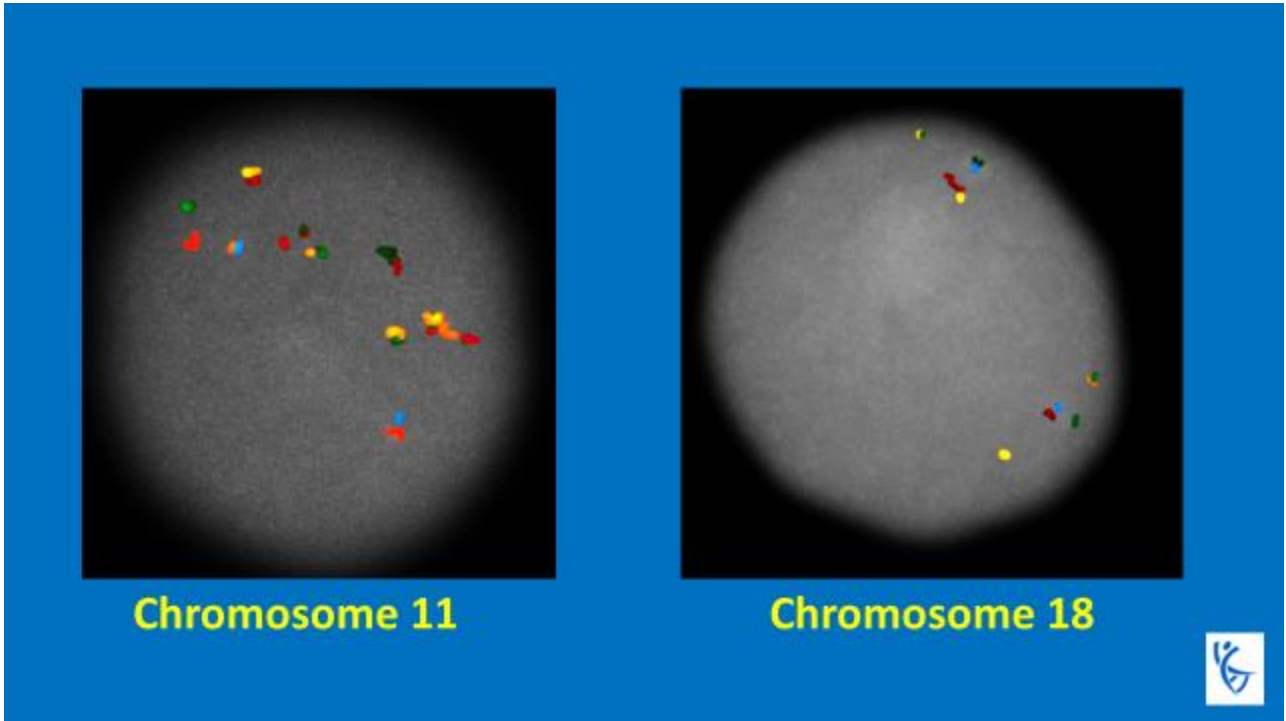


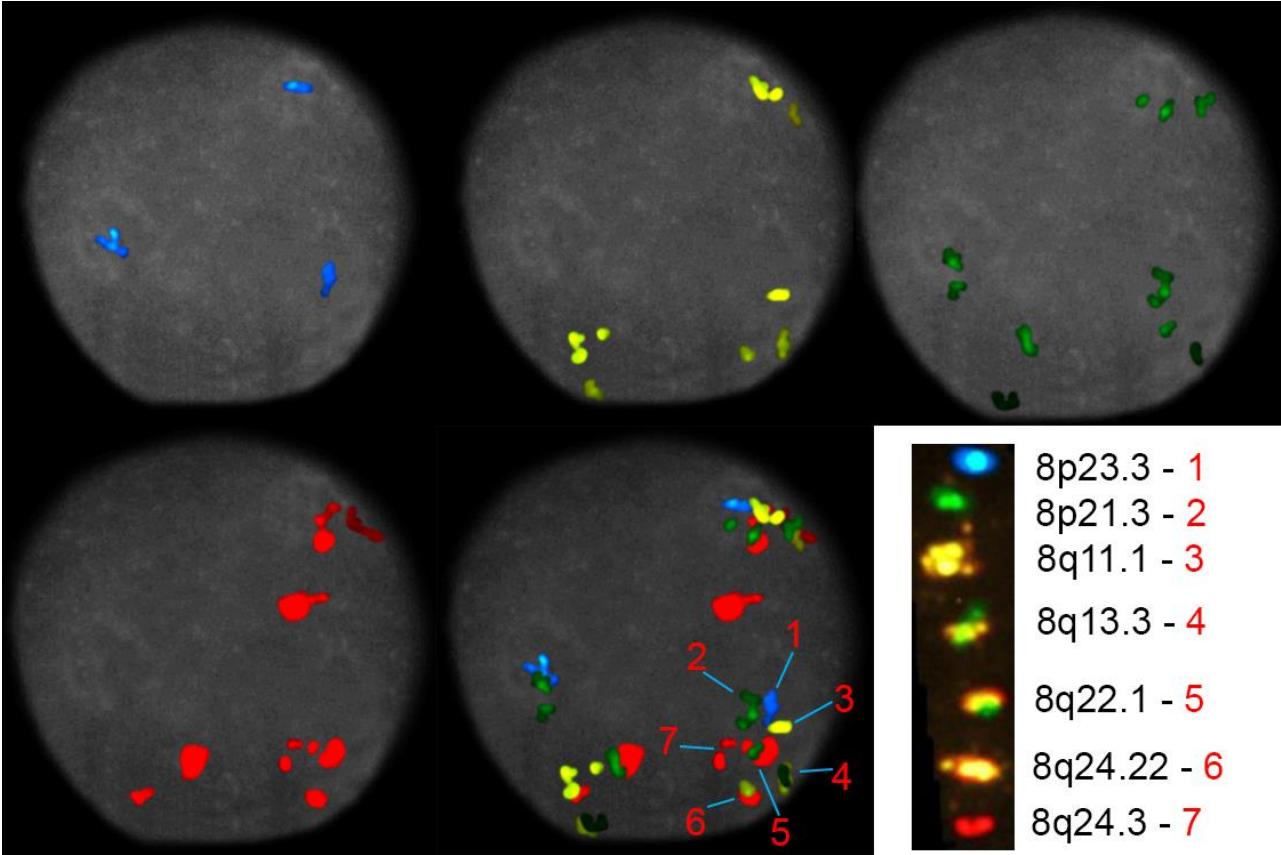
Normal metaphase with chromosome 1 depicting ICP banding pattern



Chromosome 11

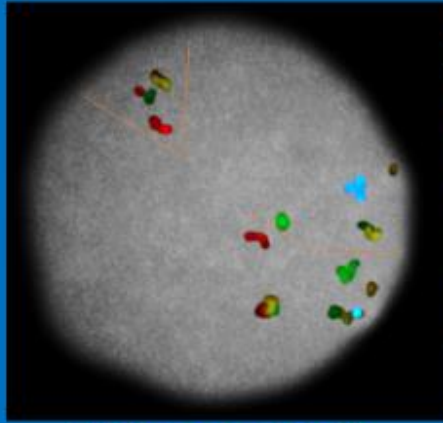
Chromosome 18

Normal chromosome 11 and 18 in interphase cells depicting ICP

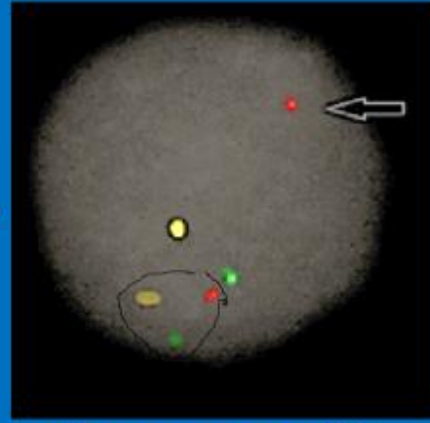
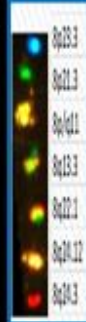


Trisomy 8 viewed through individual filters and composite image

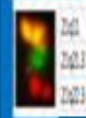
t(8;21)(q22;q22)



Chromosome 8

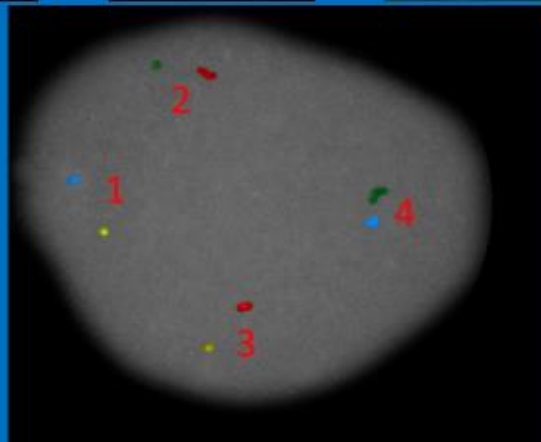
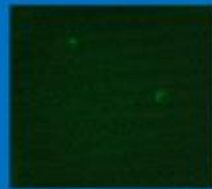
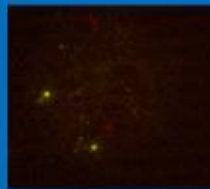
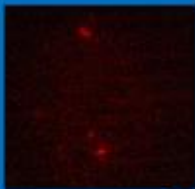


Chromosome 21



Balanced translocation

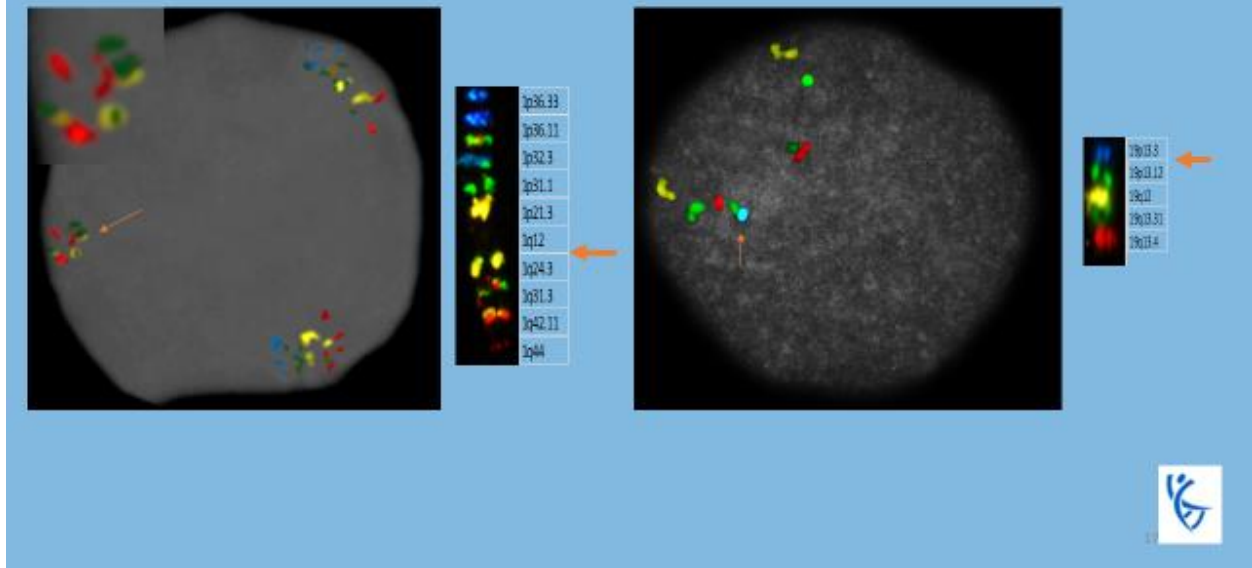
Confirmation of t(8;21)(q22;q22)



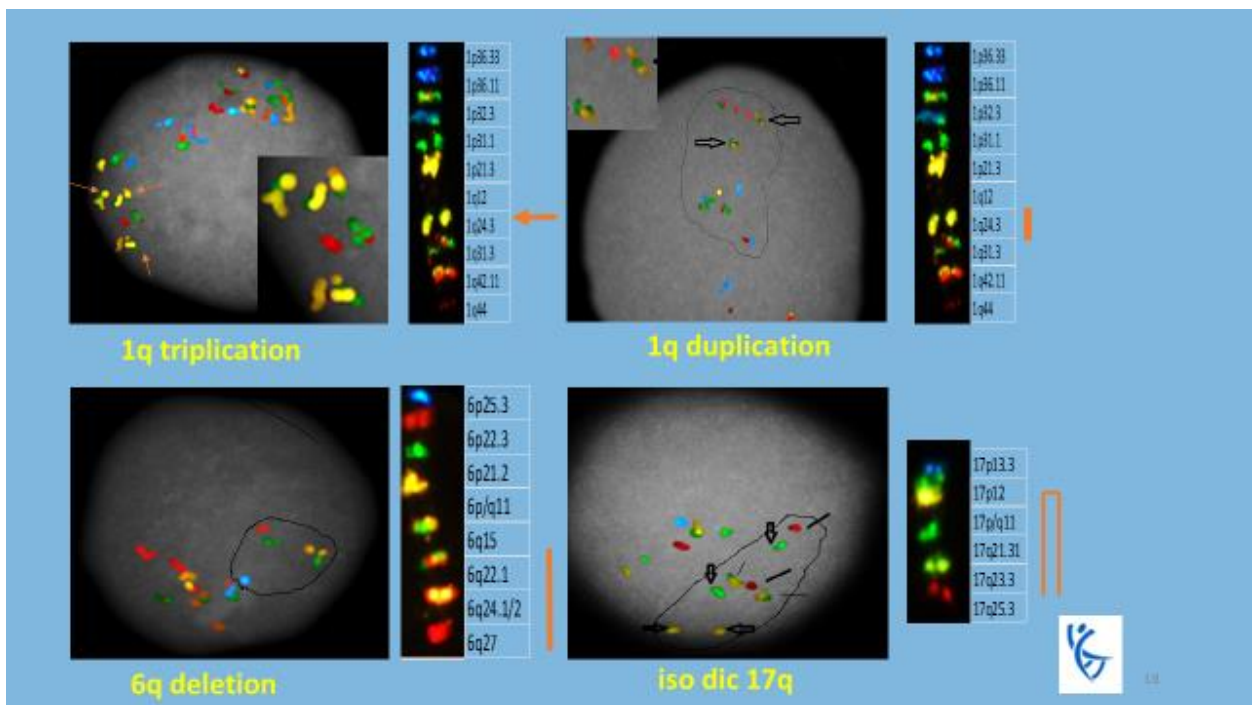
- 1 = N8
- 2 = N21
- 3 = der 8
- 4 = der 21



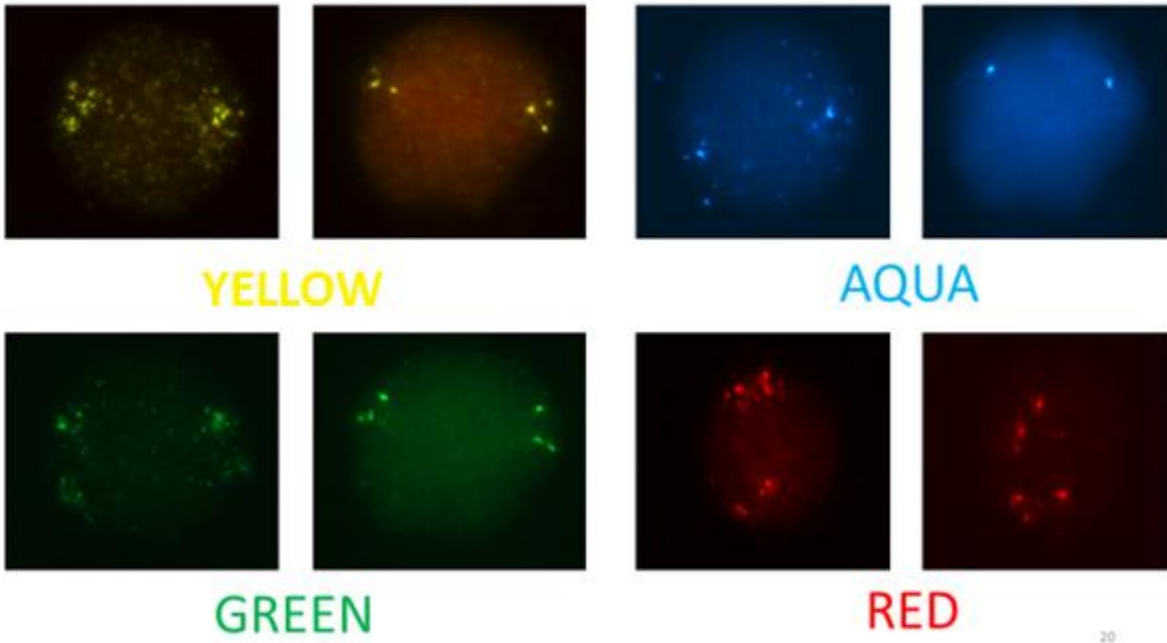
der(19)t(1;19)(q23;p13)



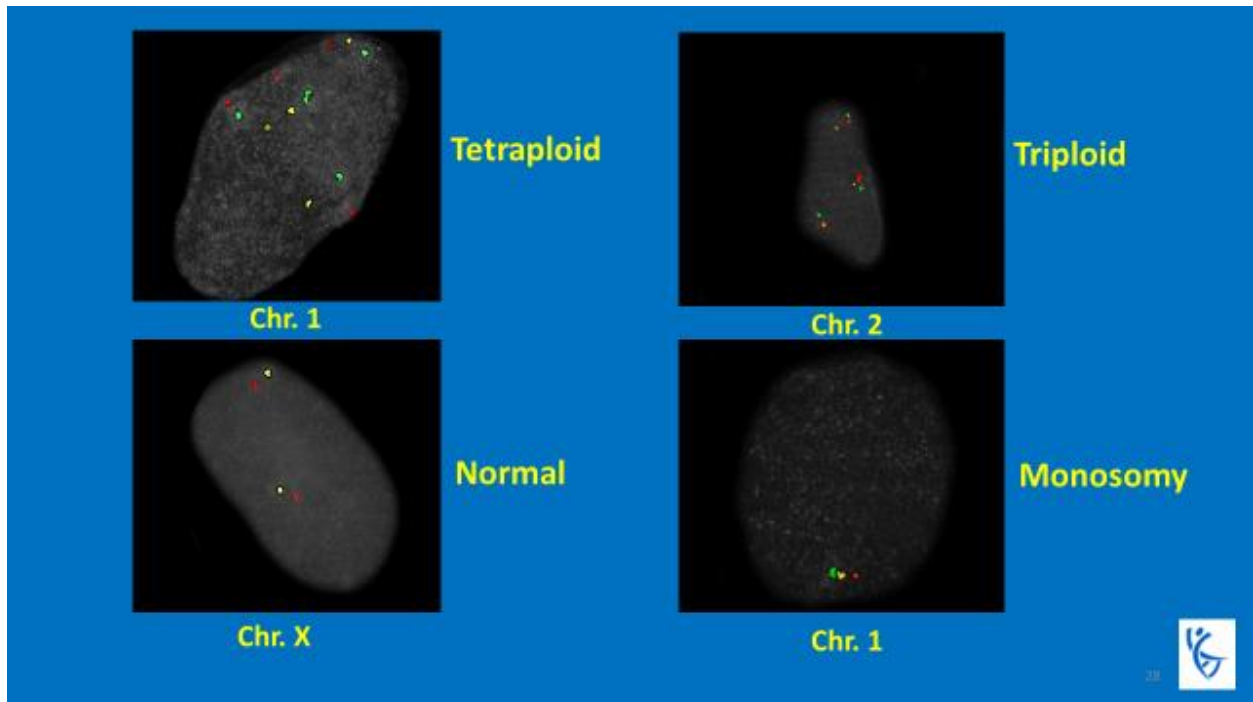
Unbalanced translocation



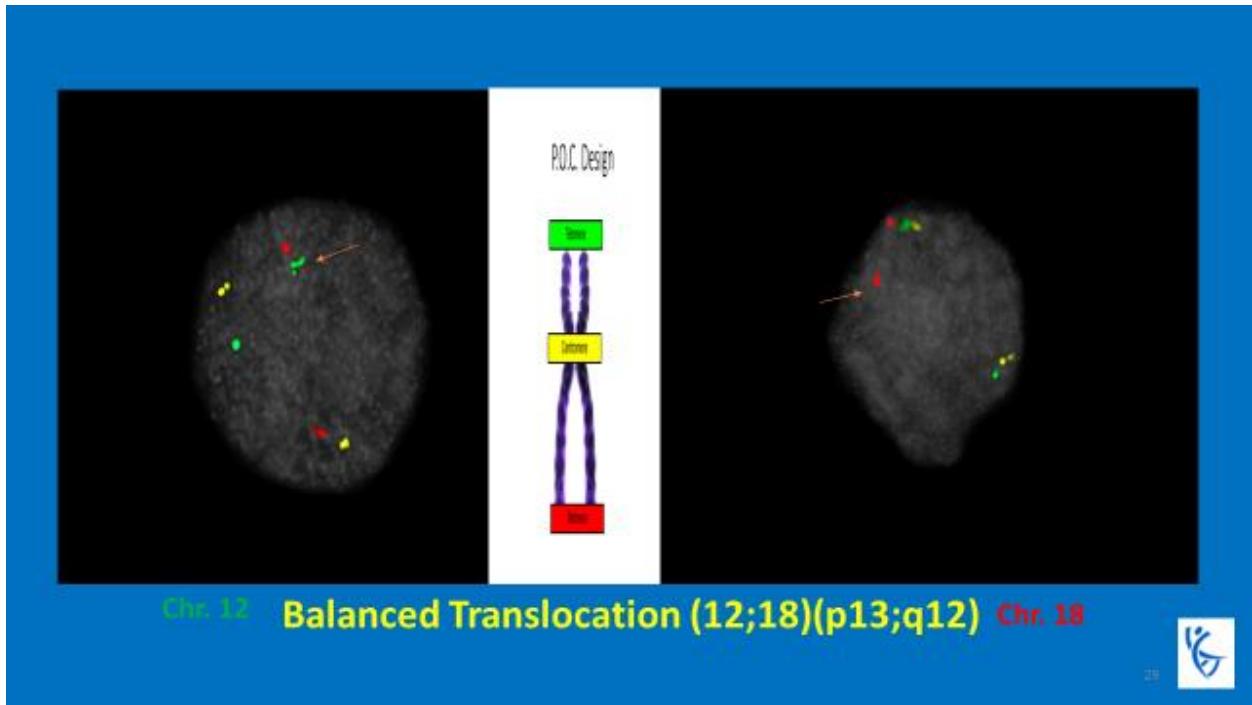
Various structural abnormalities



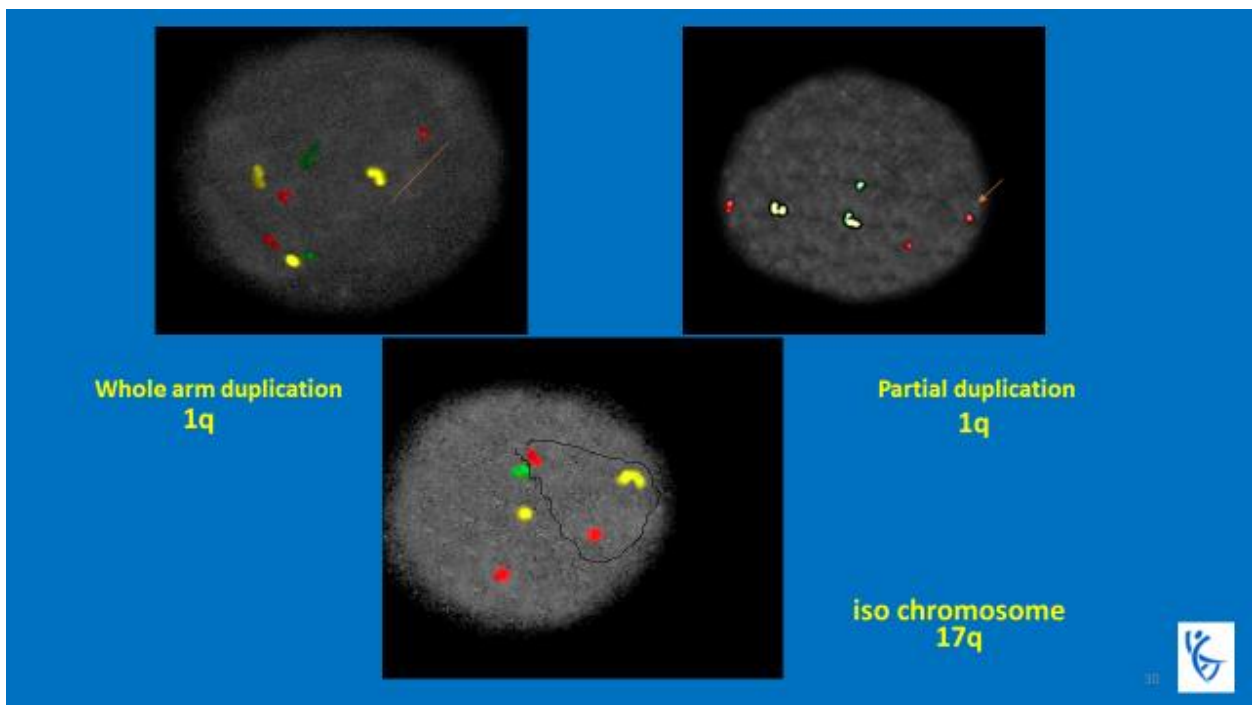
Direct vs. Culture In each set left is from direct preparation and right is from overnight modified culture



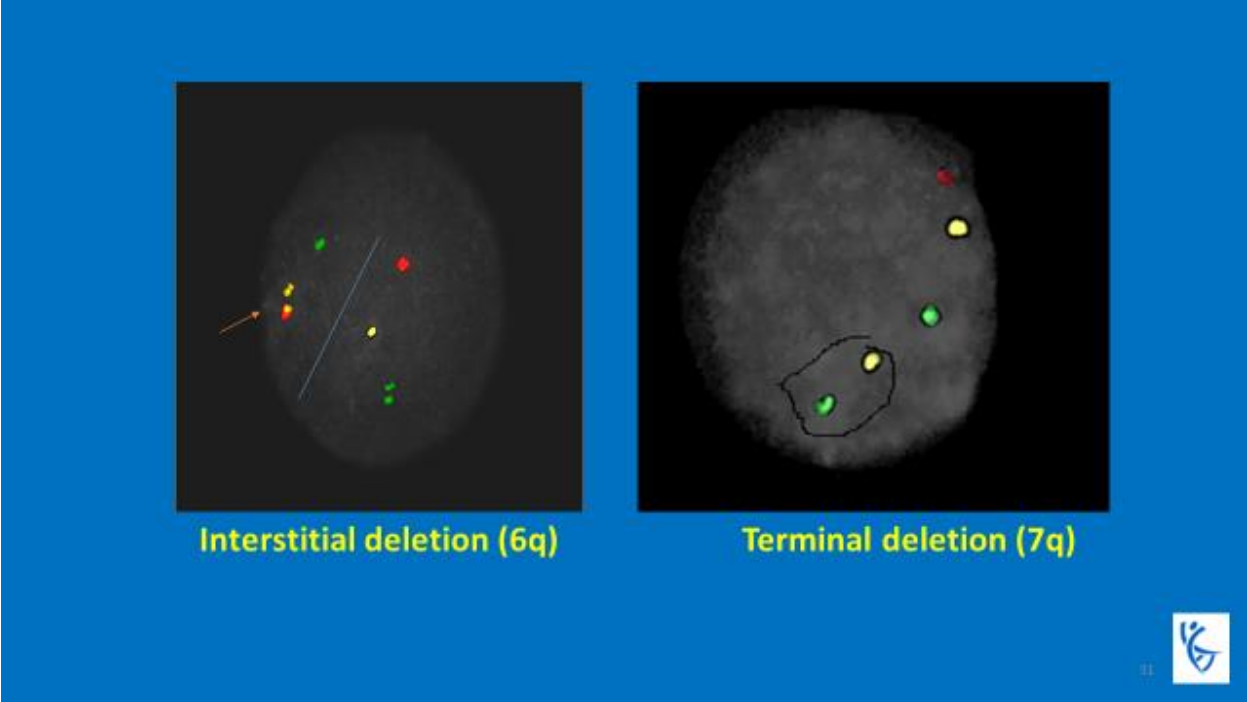
Common abnormalities seen in product of conception samples



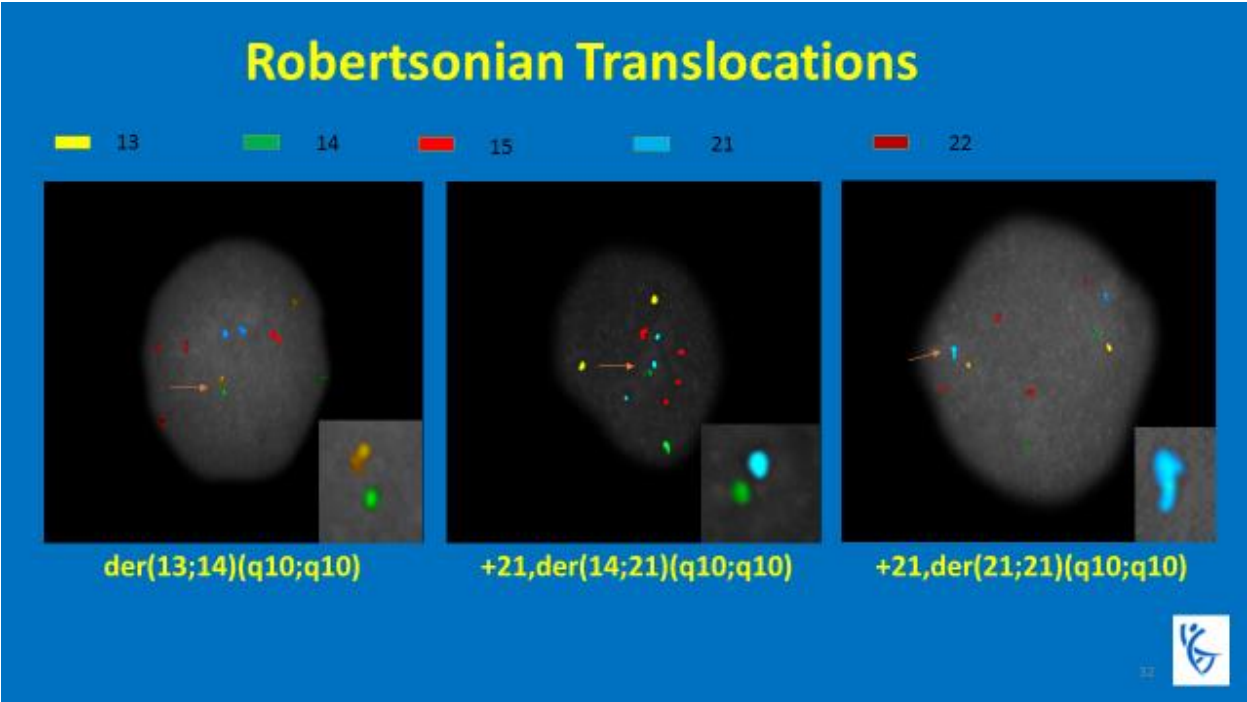
Balanced translocation as visualized by POC ICP design



Various abnormalities seen with POC ICP design



Various abnormalities seen with POC ICP design



Non-random adjacent position (co-localization) of two signals indicating translocation

