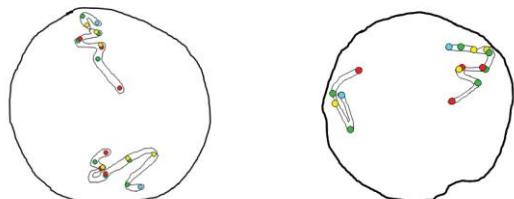
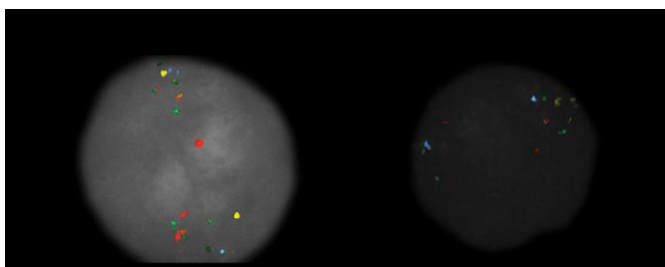
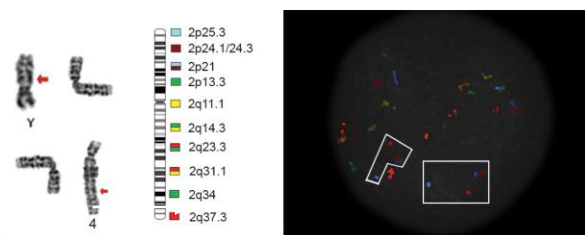


### Interphase Chromosome Profiling (ICP)

- Detects all numerical and major structural abnormalities
- Determination of breakpoints at higher resolution
- Characterization of derivative, marker, and add chromosomes
- Guaranteed complete karyotype results
- Preferred REFLEX option for conventional cytogenetics failures

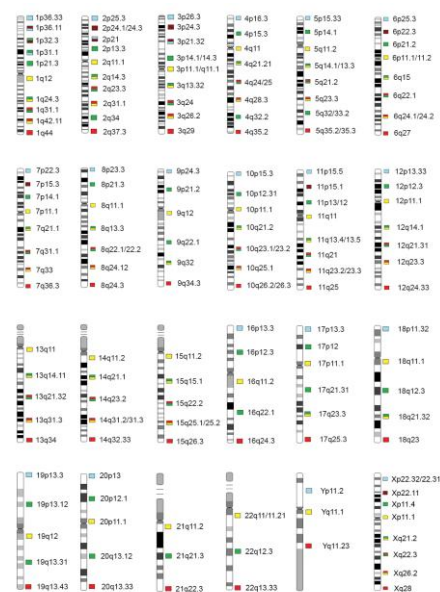


[Interstitial Deletion of Chromosome 5]



[Characterization of *add* and *mar* Chromosomes]

### DESIGN



**Catalog number:** HR-1\*

**Probe name:** Chromosome 1 HR ASR\*

### TECHNICAL SPECIFICATIONS

**Method:** Interphase Chromosome Profiling (ICP)

**Denaturation:** 82°C, 2 min

**Hybridization time:** 45°C [15 min to 16 hr.]

**No. cells analyzed:** 20

**Detection:** Individual color filters (Semrock Inc.)

**Green** - #SpGr-B-000

**Red** - #SpRed-B-000

**Aqua** - #SpAqua-C-000

**Gold/Far Red** - #Cy3/Cy5-A-000

**Camera:** 5MP Color CCD for fluorescence microscopy

\*For a full list of our products, please see our website

### Literature

Interphase Chromosome Profiling: A Method for Conventional Banded Chromosome Analysis Using Interphase Nuclei. Archives of Pathology & Laboratory Medicine: February 2018, Vol. 142, No. 2, pp. 213-228. (<https://doi.org/10.5858/arpa.2016-0621-OA>)

### InteGen LLC

8865 Commodity Circle, Suite 2

Orlando, FL 32819

Phone: (407) 545-6428 / Fax: (407) 345-6789

Email: [contact@integenllc.com](mailto:contact@integenllc.com)



[www.integenllc.com](http://www.integenllc.com)