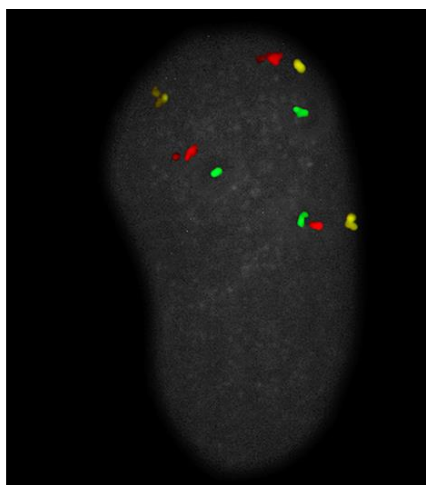
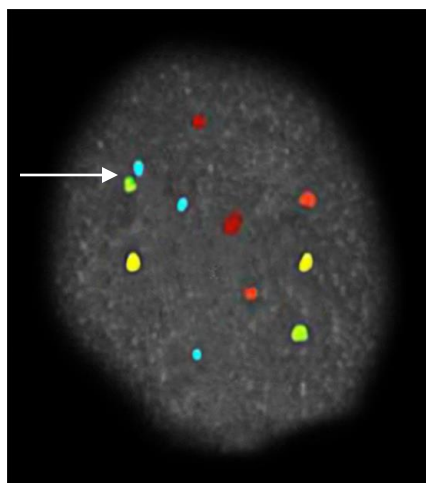


Interphase Chromosome Profiling (ICP)

- Detects all numerical and structural abnormalities identified in the conventional cytogenetic studies
- Detects cryptic rearrangements, balanced and unbalanced missed by cytogenetics and FISH
- Detects Robertsonian translocations
- Analysis time is the same or less than a G-banded study (~45 min)
- Guaranteed results
- Cost-effective

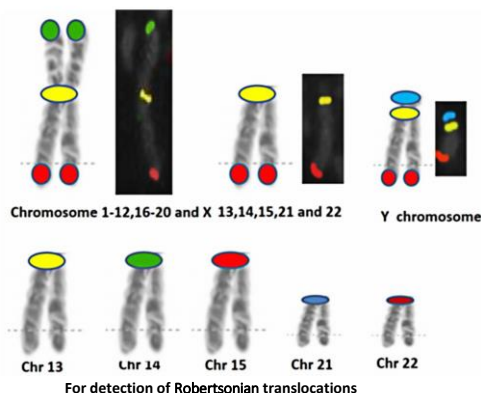


[Trisomy]



[Robertsonian Translocation]

DESIGN



Catalog number: SR-1*

Probe name: Chromosome 1 SR ASR*

TECHNICAL SPECIFICATIONS

Method: Interphase Chromosome Profiling (ICP)

Denaturation: 82°C, 2 min

Hybridization time: 45°C [15 min to 16 hr.]

No. cells analyzed: 20

Detection: Individual color filters (Semrock Inc.)

Green - #SpGr-B-000

Red - #SpRed-B-000

Aqua - #SpAqua-C-000

Gold - #Cy3/Cy5-A-000

Camera: 5MP Color CCD for fluorescence microscopy

*For a full list of our products, please see our website

Literature

A Rapid and Reliable Chromosome Analysis Method for Products of Conception using Interphase Nuclei
[Molecular Genetics & Genomic Medicine (in press)]

InteGen LLC

8865 Commodity Circle, Suite 2

Orlando, FL 32819

Phone: (407) 545-6428 / Fax: (407) 345-6789

Email: contact@integenllc.com



www.integenllc.com