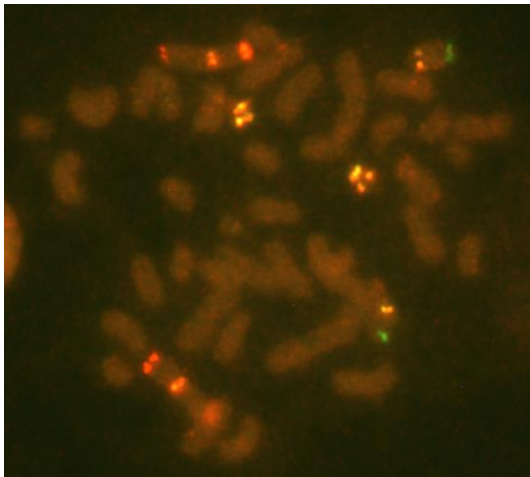
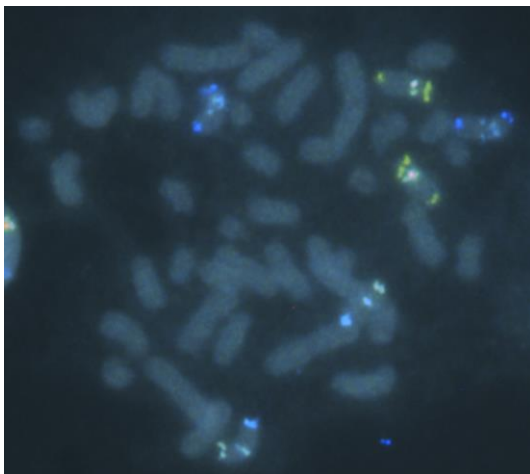


Multiplex ALL - Metaphase Chromosome Profiling

- Detects all numerical and structural abnormalities identified in conventional cytogenetic and FISH studies
- Detects cryptic rearrangements, balanced and unbalanced missed by cytogenetics and FISH
- Detects novel terminal deletions, including IgH variable region
- Detects all clinically relevant deletions and duplications/amplifications
- Analysis time is significantly reduced

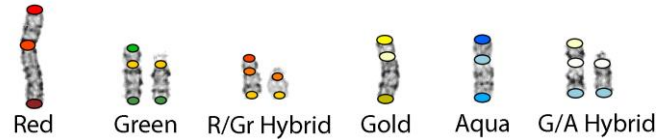


[Mix 1 viewed under Green/Red filter]



[Mix 1 viewed under Aqua/Gold filter]

DESIGN



Color Pattern	Mix 1	Mix 2	Mix 3	Mix 4	Mix 5**
Red	2	1	4	7	9p21.3
Green	14	12	10	16	6q21
R/Gr Hybrid	22	17	Y	13	13q14.2
Gold	8	X	5	3	21q22.12
Aqua	9	19	6	18	Xp22.33
G/A Hybrid	11	21	20	15	

**For deletions/duplications

Catalog number: ALL-1*

Probe name: Multiplex ALL-1 ASR*

TECHNICAL SPECIFICATIONS

Method: Metaphase Multiplex FISH

Denaturation: 82°C, 2 min

Hybridization time: 45°C [15 min to 16 hr.]

No. cells analyzed: 20

Detection: Two dual-color filters (Chroma Technologies Inc.)

Green/Red - #59010 (Analysis on the microscope)

Aqua/Gold - #59033 (Analysis off the monitor)

Camera: 5MP Color CCD for fluorescence microscopy

*For a full list of our products, please see our website

Literature

ALL-ICP, a simple and comprehensive method to detect chromosome abnormalities in Acute Lymphocytic Leukemia. (Poster number H40. AMP 2017, Salt Lake City)

InteGen LLC

8865 Commodity Circle, Suite 2

Orlando, FL 32819

Phone: (407) 545-6428 / Fax: (407) 345-6789

Email: contact@integenllc.com



www.integenllc.com