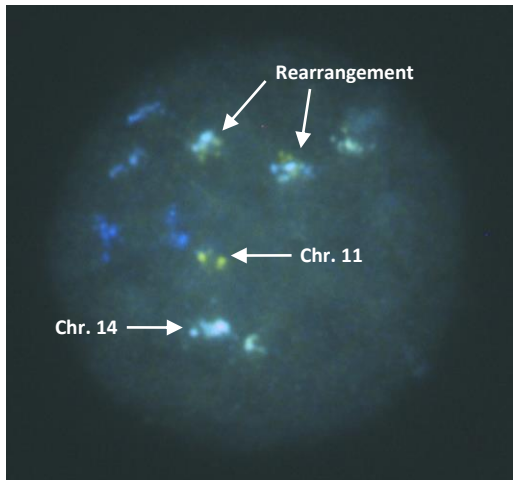
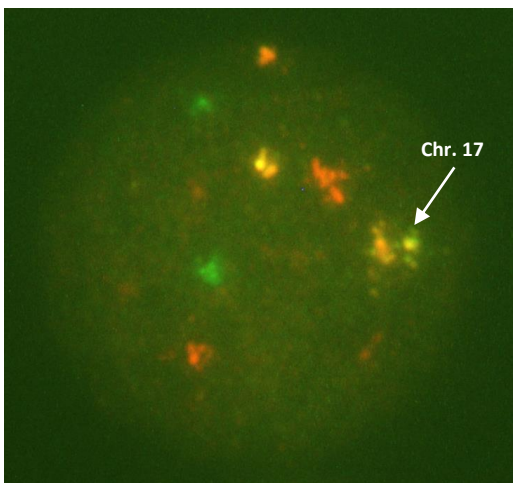


### Multiplex Interphase Chromosome Profiling

- Detects all clinically relevant numerical and structural abnormalities
- Detects more abnormalities than standard FISH
- Detects novel Xq duplication
- Saves technologists' time (200 vs 1200 cells)
- Guaranteed results
- Cost-effective (1-2 vs 6-7 hybridizations)









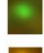
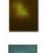


[t(11;14)(q13;q32)]



[p53 deletion]

### DESIGN

#### Signal Characteristics

- |               |   |   |                |
|---------------|---|---|----------------|
| • Aqua        |  |  | • Aqua hybrid  |
| • Gold        |  |  | • Gold hybrid  |
| • Red         |  |  | • Red hybrid   |
| • Green       |  |  | • Green hybrid |
| • R/Gr Hybrid |  |  | • G/A hybrid   |

#### Color Scheme

	Aqua	Gold	Red	Green	R/Gr Hyb.	Aqua Hyb.	Gold Hyb.	Red Hyb.	Green Hyb.	G/A Hyb.
Mix 1	4	11	16	6	20	13	1	X	17	14
Mix 2	3	7	9	5	21		11		15	19

**Catalog number:** MM-1\*

**Probe name:** Multiplex MM 1 ASR\*

### TECHNICAL SPECIFICATIONS

**Method:** Multiplex Interphase Chromosome Profiling

**Denaturation:** 82°C, 2 min

**Hybridization time:** 45°C [15 min to 16 hr.]

**No. cells analyzed:** 200

**Detection:** Two dual-color filters (Chroma Technologies Inc.)

**Green/Red** - #59010 (Analysis on the microscope)

**Aqua/Gold** - #59033 (Analysis off the monitor)

**Camera:** 5MP Color CCD for fluorescence microscopy

\*For a full list of our products, please see our website

### Literature

Multiplex MM-ICP, a simple and comprehensive method to detect abnormalities in multiple myeloma [manuscript in preparation]

### InteGen LLC

8865 Commodity Circle, Suite 2

Orlando, FL 32819

Phone: (407) 545-6428 / Fax: (407) 345-6789

Email: [contact@integenllc.com](mailto:contact@integenllc.com)



[www.integenllc.com](http://www.integenllc.com)