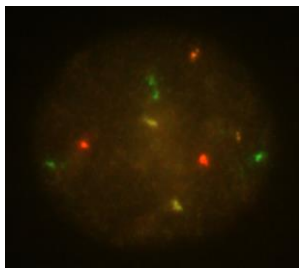
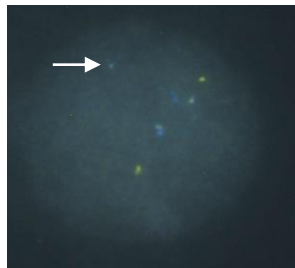


Multiplex Interphase Chromosome Profiling

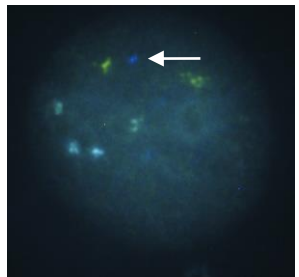
- Detects all common aneuploidies – 13, 18, 21, X and Y with option to detect all chromosomes
- Detects all common microdeletions
- Rapid results with 15 min. FISH
- Guaranteed results
- Cost-effective



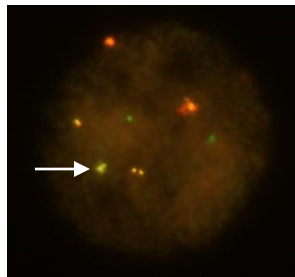
[Chromosomes 13, 18, 21, X and Y]



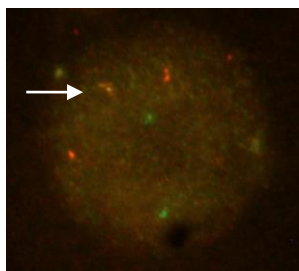
[17p deletion, Chromosome 22]



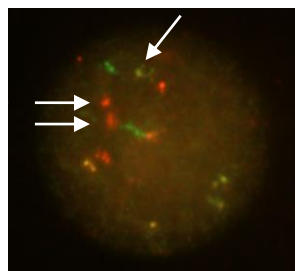
[4p deletion]



[5p deletion]







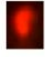





[Monosomy X]



[Trisomy 18, tetrasomy 21]

DESIGN

Signal Characteristics

- | | | | |
|---------------|---|---|----------------|
| • Aqua |  |  | • Aqua hybrid |
| • Gold |  |  | • Gold hybrid |
| • Red |  |  | • Red hybrid |
| • Green |  |  | • Green hybrid |
| • R/Gr Hybrid |  |  | • G/A hybrid |

Catalog number: PN-1*

Probe name: Multiplex Prenatal 1 ASR*

TECHNICAL SPECIFICATIONS

Method: Multiplex Interphase Chromosome Profiling

Denaturation: 82°C, 2 min

Hybridization time: 45°C [15 min to 16 hr.]

No. cells analyzed: 200

Detection: Two dual-color filters (Chroma Technologies Inc.)

Green/Red - #59010 (Analysis on the microscope)

Aqua/Gold - #59033 (Analysis off the monitor)

Camera: 5MP Color CCD for fluorescence microscopy

*For a full list of our products, please see our website

Literature

Multiplex PN-ICP, a simple and comprehensive method to detect common aneuploidy and microdeletions in prenatal samples [manuscript in preparation]

InteGen LLC

8865 Commodity Circle, Suite 2

Orlando, FL 32819

Phone: (407) 545-6428 / Fax: (407) 345-6789

Email: contact@integenllc.com



www.integenllc.com