



InteGen
Innovative FISH Probes

Multiplex ALL -1

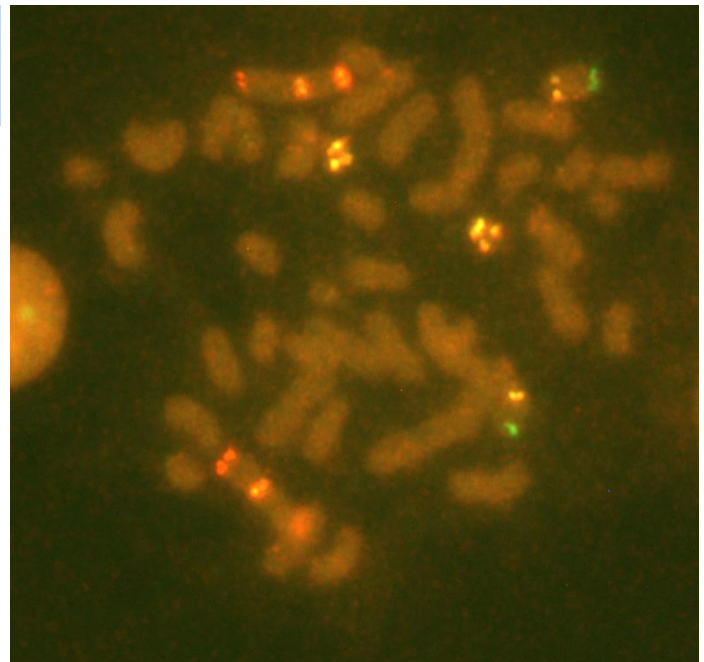
Catalog No.: ALL-1.1, 25 Reactions
ALL-1.2, 25 Reactions
ALL-1.3, 25 Reactions

Product Specifications

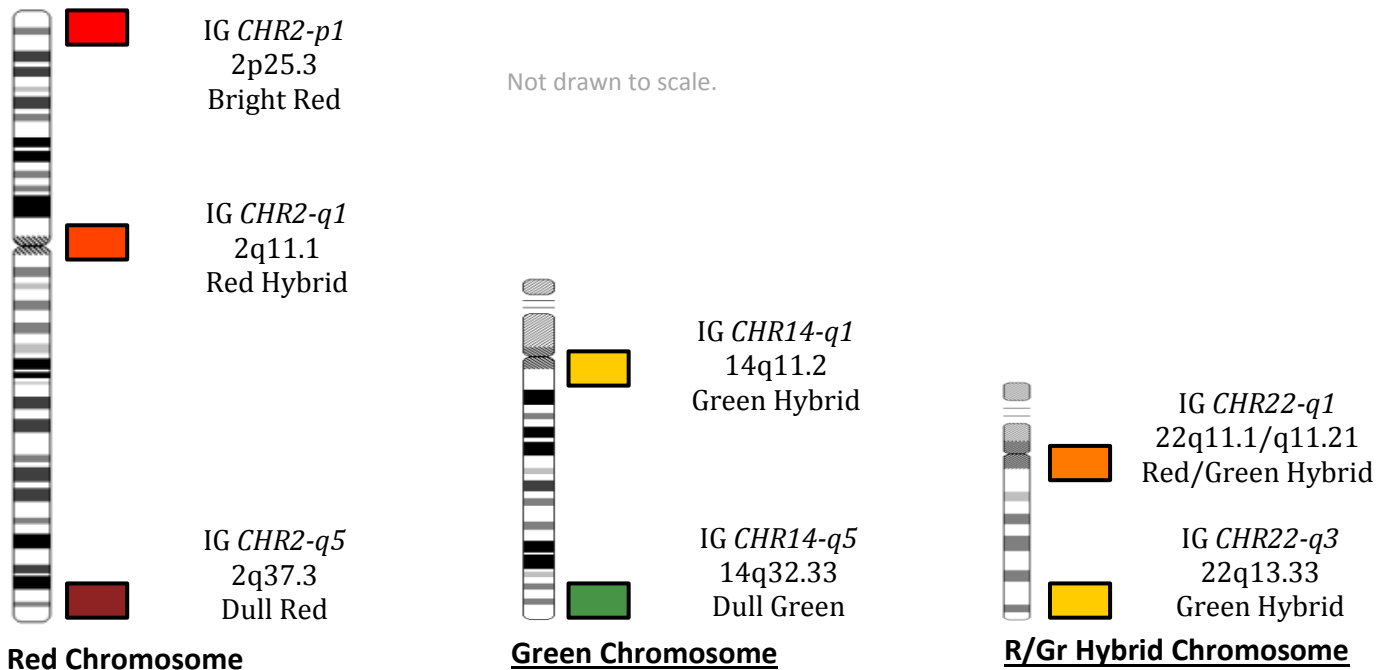
Multiplex ALL-1 probe is a multicolored chromosome mix which consists of six chromosomes labeled with a predominant color scheme. Telomeres and pericentromeric regions on each chromosome are labeled with spectrally distinct fluorochrome. The mix is viewed three chromosomes at a time using dual filters. This design detects all numerical and structural abnormalities related to B- and T-cell Acute Lymphocytic Leukemia (ALL).

Three variations of the Multiplex ALL-1 Probe mix are offered:

- ALL-1.1 Instant 15 minute Hybridization
- ALL-1.2 Rapid 3 hour Hybridization
- ALL-1.3 Overnight 16-21 hour Hybridization



Multiplex ALL-1 probe hybridized to a metaphase and captured with the Red/Green dual filter.



ASR: Analyte Specific Reagent, analytical and performance characteristics are not established.

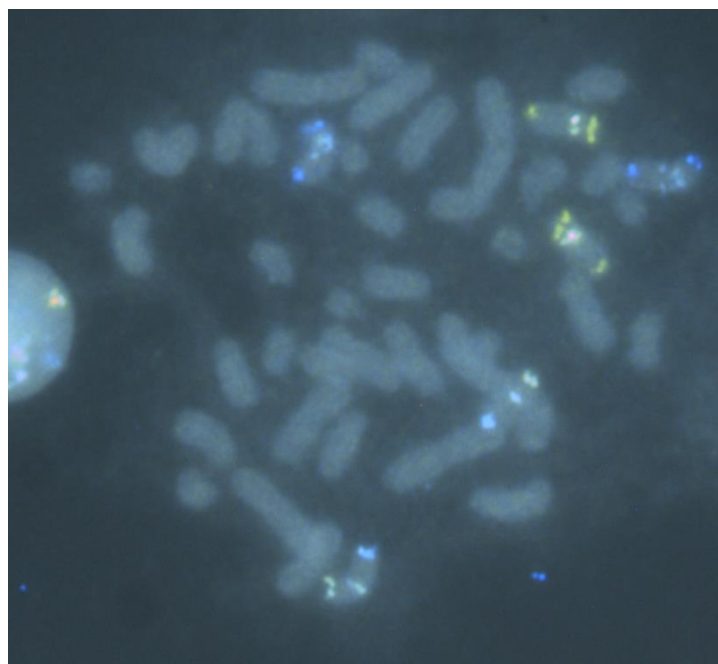


InteGen
Innovative FISH Probes

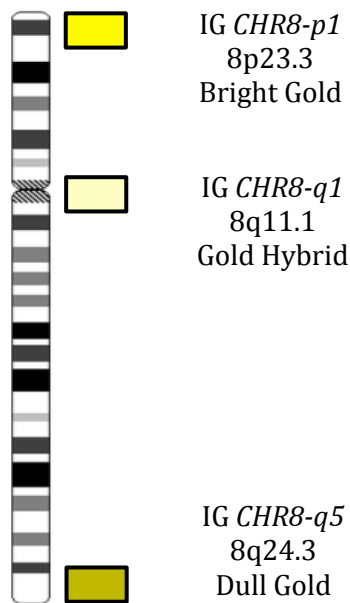
Multiplex ALL -1

Catalog No.: ALL-1.1, 25 Reactions
ALL-1.2, 25 Reactions
ALL-1.3, 25 Reactions

ALL-1 Color Pattern	Chromosome
Red	2
Green	14
R/G Hybrid	22
Gold	8
Aqua	9
Y/A Hybrid	11

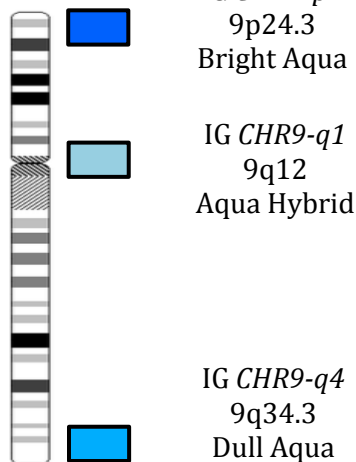


Multiplex ALL-1 probe hybridized to a metaphase and captured with the Gold/Aqua dual filter.

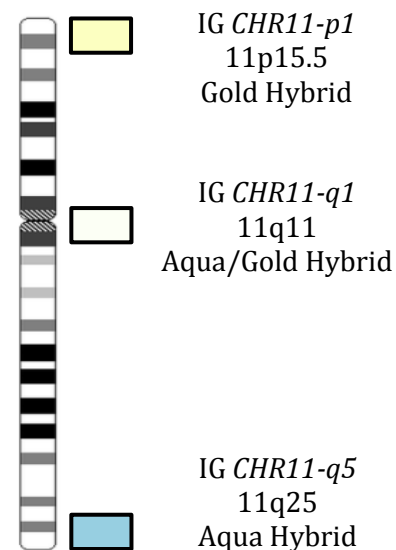


Gold Chromosome

Not drawn to scale.



Aqua Chromosome



G/A Hybrid Chromosome

ASR: Analyte Specific Reagent, analytical and performance characteristics are not established.