



InteGen
Innovative FISH Probes

Multiplex ALL -2

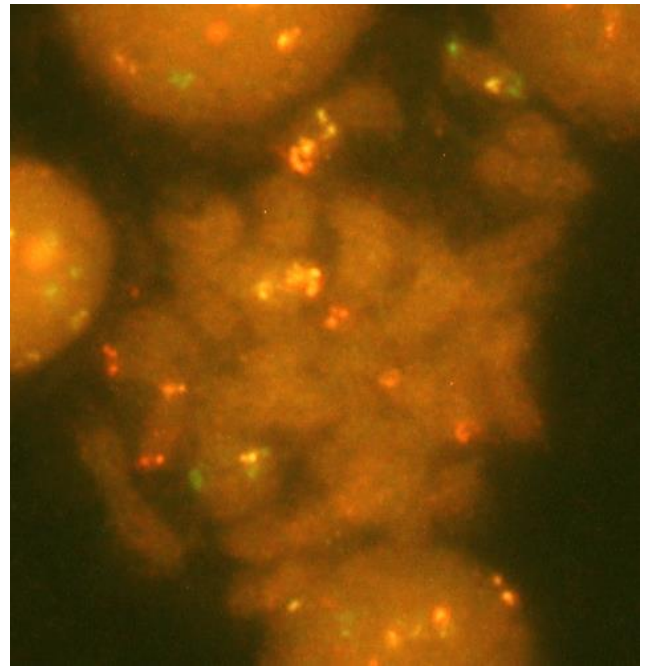
Catalog No.: ALL-2.1, 25 Reactions
ALL-2.2, 25 Reactions
ALL-2.3, 25 Reactions

Product Specifications

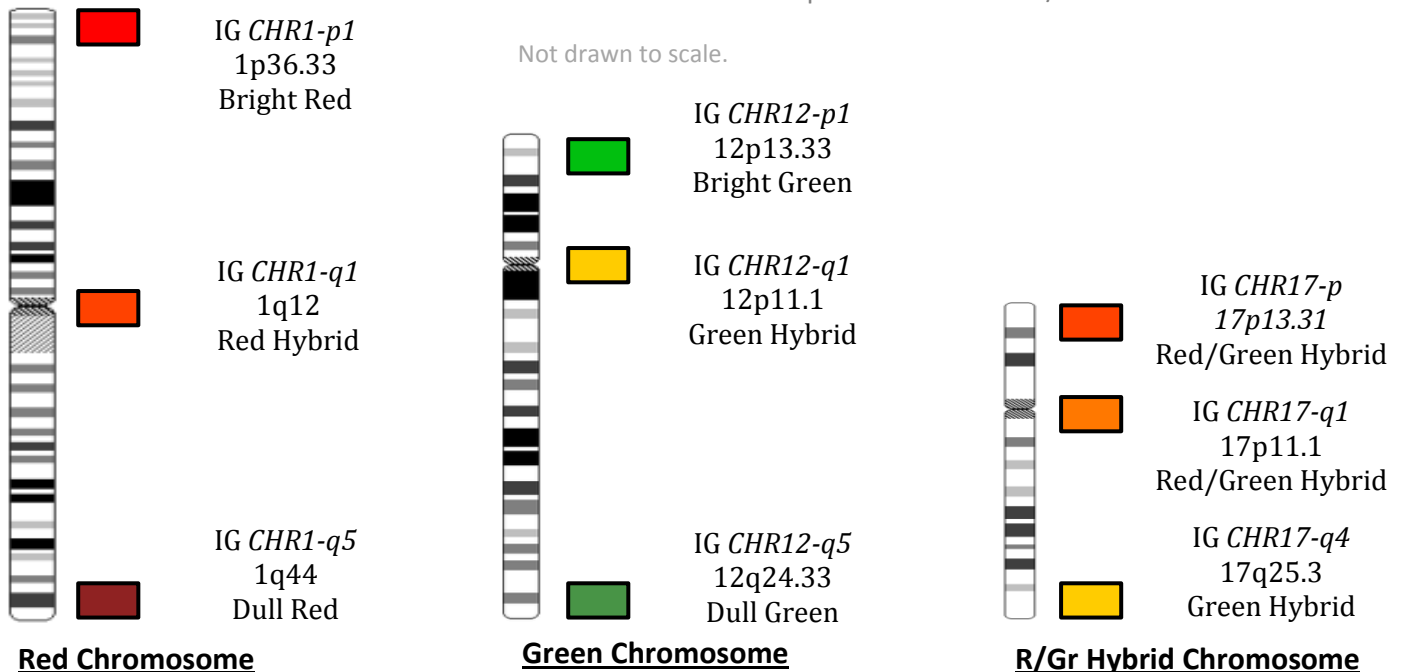
Multiplex ALL-2 probe is a multicolored chromosome mix which consists of six chromosomes labeled with a predominant color scheme. Telomeres and pericentromeric regions on each chromosome are labeled with spectrally distinct fluorochrome. The mix is viewed three chromosomes at a time using dual filters. This design detects all numerical and structural abnormalities related to B- and T-cell Acute Lymphocytic Leukemia (ALL).

Three variations of the Multiplex ALL-2 Probe mix are offered:

- ALL-2.1 Instant 15 minute Hybridization
- ALL-2.2 Rapid 3 hour Hybridization
- ALL-2.3 Overnight 16-21 hour Hybridization



Multiplex ALL-2 probe hybridized to a metaphase and captured with the Red/Green dual filter.



ASR: Analyte Specific Reagent, analytical and performance characteristics are not established.

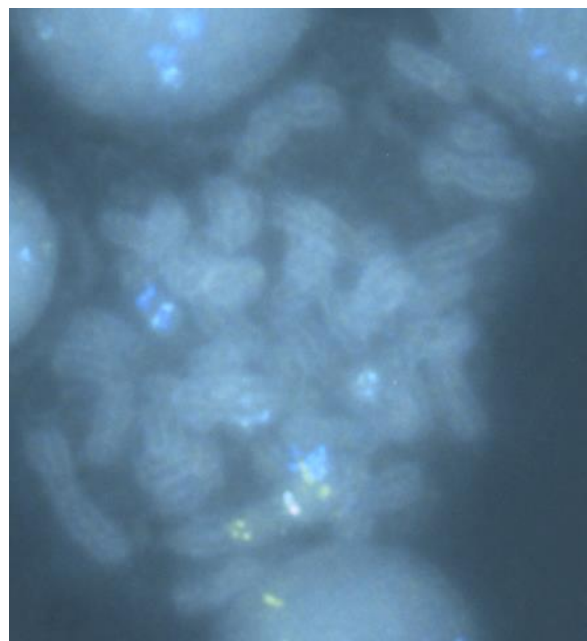


InteGen
Innovative FISH Probes


Multiplex ALL -2

Catalog No.: ALL-2.1, 25 Reactions
ALL-2.2, 25 Reactions
ALL-2.3, 25 Reactions

ALL-1 Color Pattern	Chromosome
Red	1
Green	12
R/G Hybrid	17
Gold	X
Aqua	19
Y/A Hybrid	21




Multiplex ALL-2 probe hybridized to a metaphase and captured with the Gold/Aqua dual filter.


 IG *CHRX-p1*
Xp22.33/p22.31
Bright Gold


Not drawn to scale.

 IG *CHRX-q1*
Xp11.1
Gold Hybrid

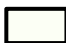
 IG *CHRX-q5*
Xq28
Dull Gold

Gold Chromosome

 IG *CHR19-p1*
19p13.3
Bright Aqua

 IG *CHR19-q1*
19q12
Aqua Hybrid
IG *CHR19-q3*
19q13.43
Dull Aqua

Aqua Chromosome

 IG *CHR21-q1*
21q11.2
Aqua/Gold Hybrid
IG *CHR21-q5*
21q22.3
Aqua Hybrid

G/A Hybrid Chromosome

ASR: Analyte Specific Reagent, analytical and performance characteristics are not established.