



InteGen
Innovative FISH Probes

Multiplex ALL -3

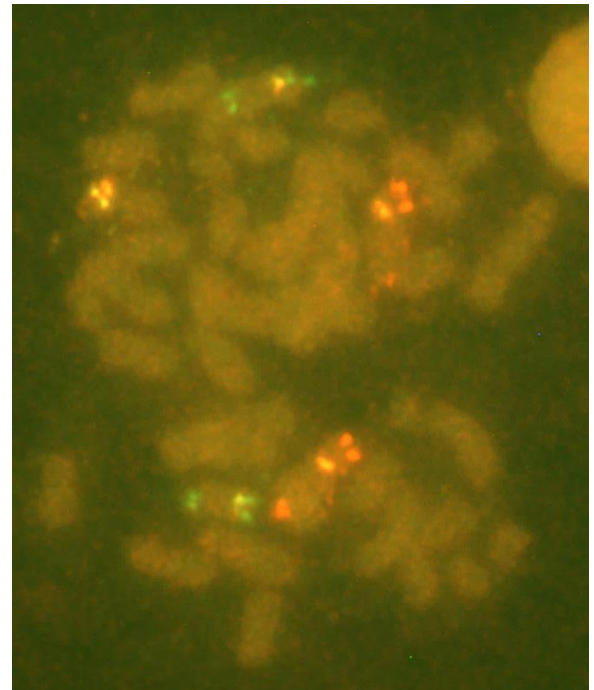
Catalog No.: ALL-3.1, 25 Reactions
ALL-3.2, 25 Reactions
ALL-3.3, 25 Reactions

Product Specifications

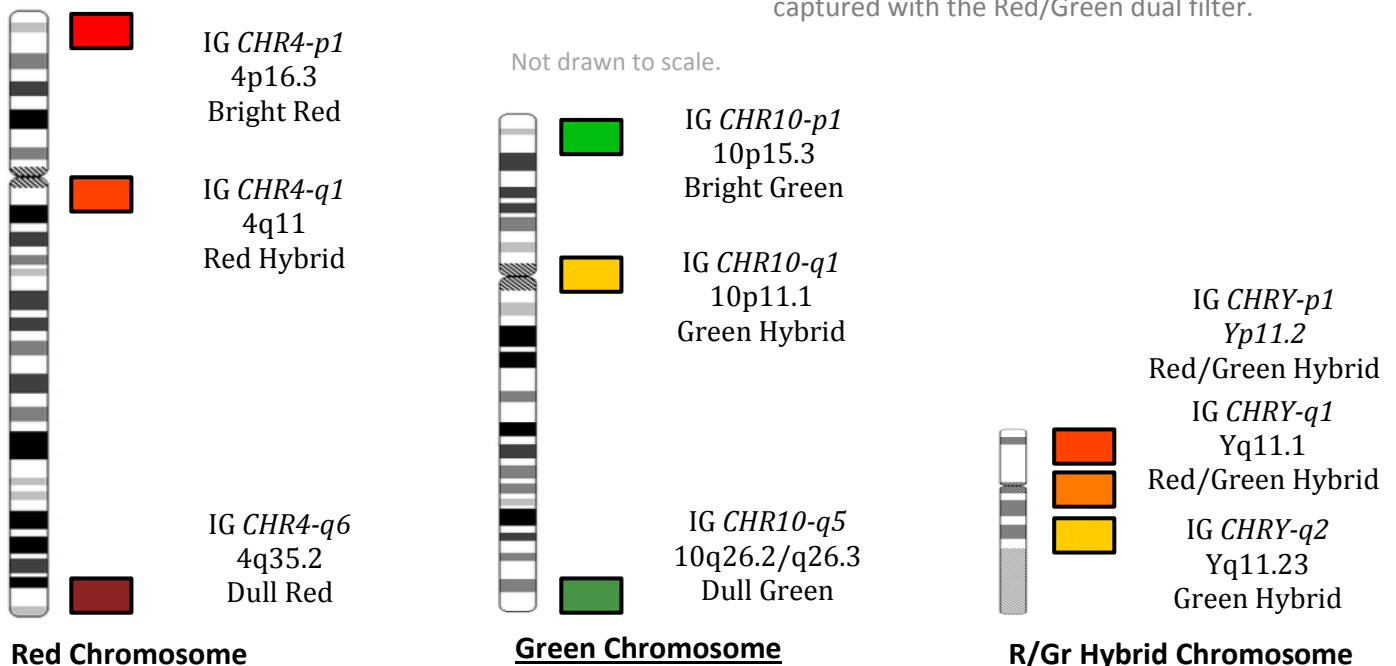
Multiplex ALL-3 probe is a multicolored chromosome mix which consists of six chromosomes labeled with a predominant color scheme. Telomeres and pericentromeric regions on each chromosome are labeled with spectrally distinct fluorochrome. The mix is viewed three chromosomes at a time using dual filters. This design detects all numerical and structural abnormalities related to B- and T-cell Acute Lymphocytic Leukemia (ALL).

Three variations of the Multiplex ALL-3 Probe mix are offered:

- ALL-3.1 Instant 15 minute Hybridization
- ALL-3.2 Rapid 3 hour Hybridization
- ALL-3.3 Overnight 16-21 hour Hybridization



Multiplex ALL-3 probe hybridized to a metaphase and captured with the Red/Green dual filter.



ASR: Analyte Specific Reagent, analytical and performance characteristics are not established.

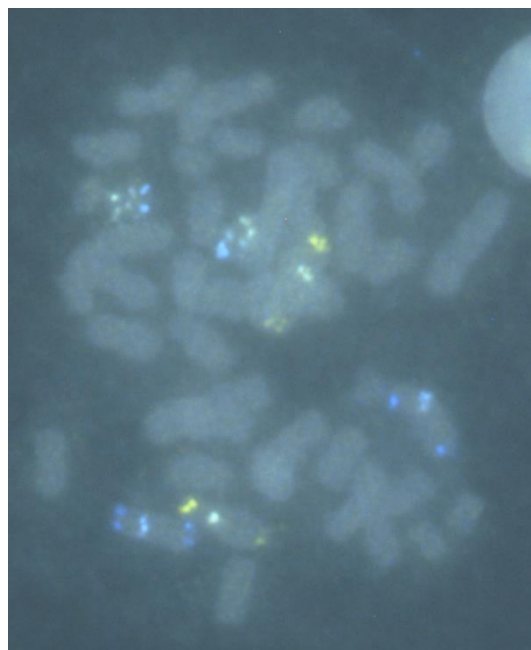


InteGen
Innovative FISH Probes

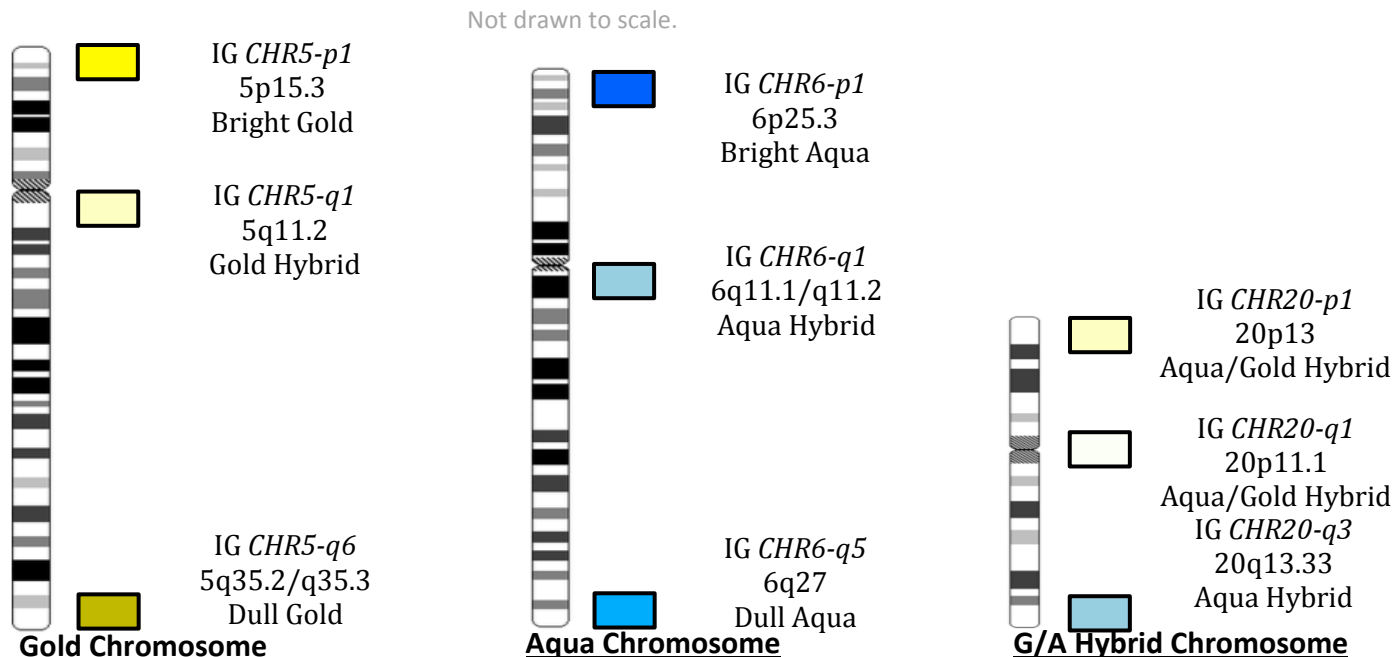
Multiplex ALL -3

Catalog No.: ALL-3.1, 25 Reactions
ALL-3.2, 25 Reactions
ALL-3.3, 25 Reactions

ALL-1 Color Pattern	Chromosome
Red	4
Green	10
R/G Hybrid	Y
Gold	5
Aqua	6
Y/A Hybrid	20



Multiplex ALL-3 probe hybridized to a metaphase and captured with the Gold/Aqua dual filter.



ASR: Analyte Specific Reagent, analytical and performance characteristics are not established.